

Project partners



EUROPEAN ASSOCIATION FOR
THE EDUCATION OF ADULTS

European Association for the Education of Adults - EAEA,
Belgium (Coordinator)
www.eaea.org



ALL DIGITAL, Belgium
www.all-digital.org



European Grants International
Academy - EGInA, Italy
www.egina.eu



Swiss Federation for Adult
Learning - SVEB, Switzerland
www.alice.ch



Pro Arbeit - Kreis Offenbach -
AöR, Germany
www.proarbeit-kreis-of.de

SkillLab

SkillLab, The Netherlands
www.skilllab.io



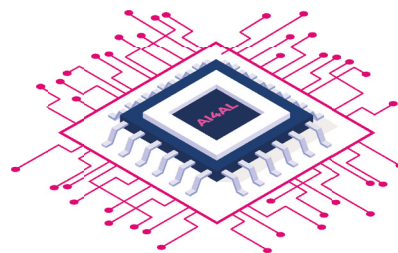
Centrul Pentru Promovarea
Invatarii Permanente Timisoara
Asociatia - CPIP, Romania
www.cpip.ro

Follow us on LinkedIn!

@ai4al
#AI4AL

Mail us on:

eaea-office@eaea.org



Co-funded by
the European Union

Project: 101090036 — ERASMUS-EDU-2022-PCOOP-ENGO. Funded by the European Union. Views and opinions expressed are however those of the author(s) only and do not necessarily reflect those of the European Union or the European Education and Culture Executive Agency (EACEA). Neither the European Union nor EACEA can be held responsible for them.



AI4AL
Artificial Intelligence
4 Adult Learning

www.ai4al.eu

BACKGROUND

AI-based solutions can transform adult learning provision by leading to improved skills assessment and tailor-made learning opportunities. Although the potential of AI for the Adult Learning and Education (ALE) sector is undeniable, it remains largely untapped.

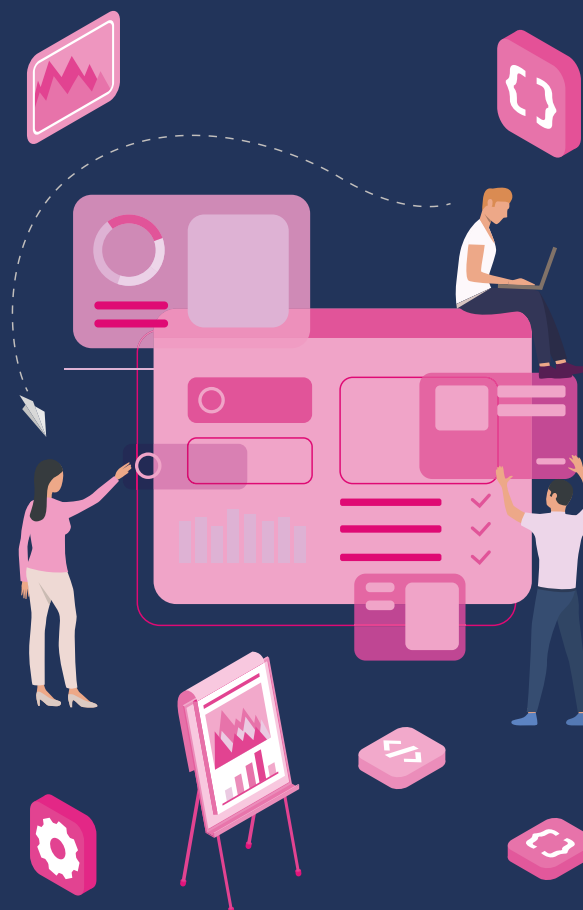
At the same time, most adult educators express their mistrust towards AI and need to be equipped with new skills to be able to apply AI in ALE.

TARGET

- Adult learning and education sector: learning providers, educators and learners
- NGOs, public services, local administrations, job centres and other stakeholders working with adults with low digital skills that are at risk of social exclusion
- Hi-tech companies applying AI technologies
- European and national policymakers

PROJECT

The AI4AL project aims to facilitate the mindful adoption of AI technologies in the ALE sector.



IMPACT

The project will highlight the key role of teachers and educators in the development and use of assistive technology, demystifying the supposed threat posed by AI. It will also contribute to the digital transformation by testing and upscaling the use of AI in skills assessment.

OUTPUTS

ENGAGEMENT KIT

A Methodological Guide and an Online Scenarios Repository for the direct involvement of educators in the process of adopting AI-based technologies in the ALE sector.

AI4AL MATCHING TOOL

An AI-based solution to link the assessment of the need for basic digital skills to the offer of micro-credentials to facilitate the construction of highly personalised training offers by adult educators.

TRAINING

A self-paced learning path for educators on the use of AI4AL and the application of AI technologies in the ALE sector.